



## Y815-DP

### High gain dual polarised 15 element Yagi Antenna

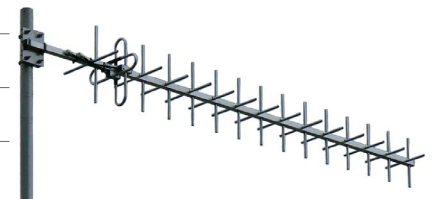
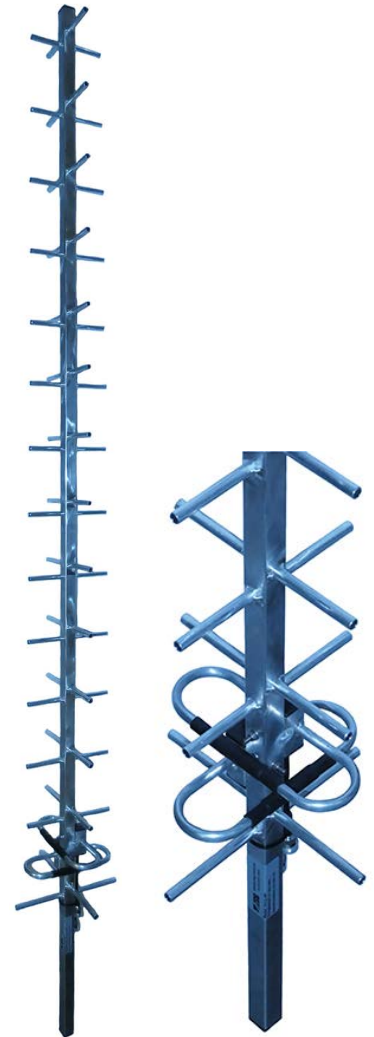
#### UHF / Mobile Phone 800-960 MHz



A dual polarised Yagi allows two signals to be transmitted from one Yagi with an offset of 90 degrees saving space on your mounting structure. The 90 degree offset disallows the signals to interact with one another.

Mounting hardware, coaxial feeder cable, connectors and other installation accessories are all available separately.

Construction	Fully welded corrosion resistant boom, elements, dipoles, external coaxial cables and chrome plated terminations
Frequency range	800-960 MHz - UHF / Mobile Phone / Digital TV
Bandwidth	Specify any 30 MHz within frequency range
Tuning	Factory
VSWR	<1.5:1 across specified bandwidth/s
Cross elements	15 - each plane
Gain - nominal	14 dBd per plane
Polarisation	Horizontal & Vertical or can be mounted +/- 45°
Maximum power	100 Watts per input
Isolation	Minimum -25dB between polarisations
Impedance	50 Ohms
DC grounding	Yes
H Plane - each plane	25°
E Plane - each plane	27°
Connector	2 x N-type female jack connectors fitted to cables
Boom length	2.3m when scaled at 800 MHz
Max. element length	300mm when scaled at 800 MHz
Weight	3.0kg
Projected area	0.099m <sup>2</sup>
Wind Load at 160kph	11.973kg, 0.117kN
Mounting hardware order separate	1 x A48 for H&V mounting or A48-AM for +/-45° mounting - larger capable mounting clamps are available, consult ZCG 1 x YS1-48 or YS2-48 strut support to reduce mechanical tilt/movement
Mounting position recommended	Mount as high onto your structure/tower as possible using the appropriate mounting hardware, ensure no metallic obstructions impede elements or dipoles as this will affect signal/performance.

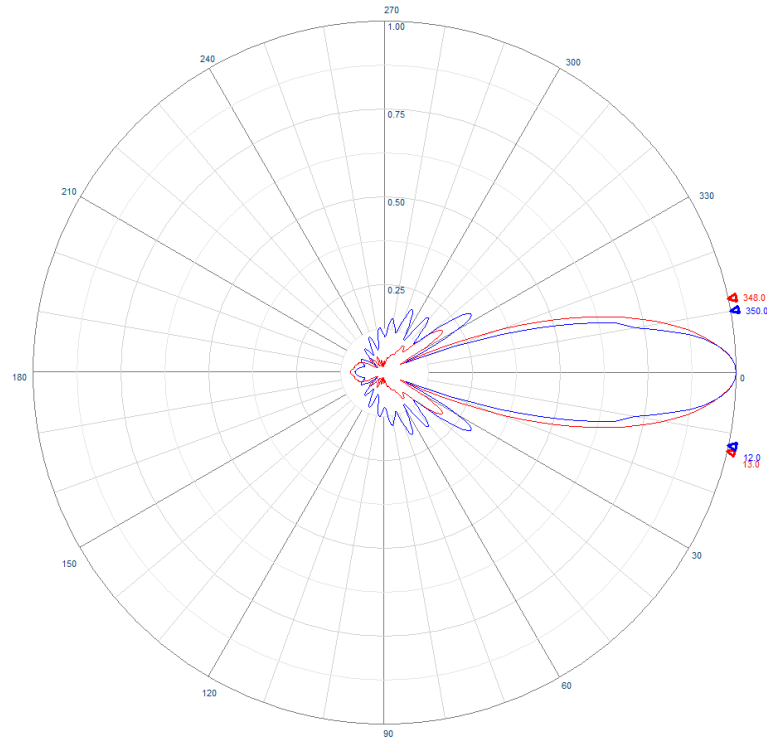




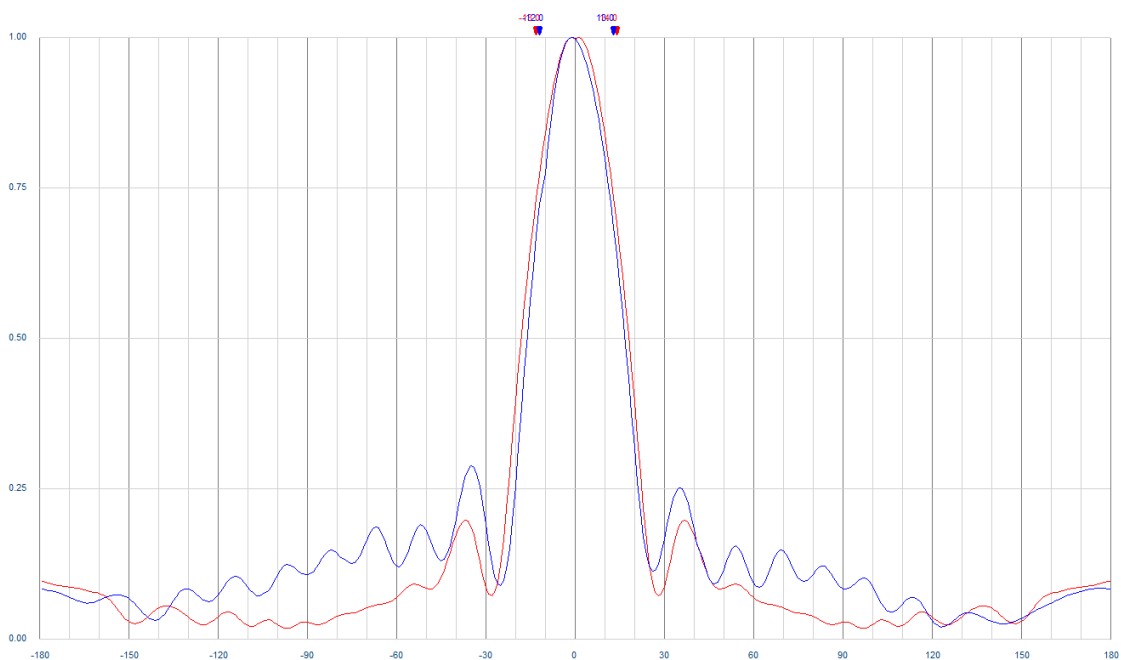
## Y815-DP

High gain dual polarised 15 element Yagi Antenna

UHF / Mobile Phone 800-960 MHz



Example Polar radiation pattern - per plane



Example Cartesian radiation pattern - per plane



## Y815-DP

High gain dual polarised 15 element Yagi Antenna

UHF / Mobile Phone 800-960 MHz




**SKU: S48**  
304 stainless steel or

**SKU: A48**  
Galvanised steel

Right-angle for 25mm RHS  
30-50mm mount pole

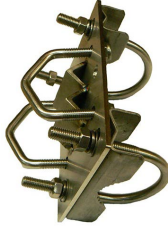


**SKU: S48-76**  
304 stainless steel right-angle  
for 25mm RHS  
60-75mm mount pole

**SKU: A48-65**  
Galvanised steel right-angle for  
25mm RHS  
50-65mm mount pole




**SKU: S48-90**  
304 stainless steel  
Right-angle for 25mm RHS  
70-90mm mount pole



**SKU: S48-AM**  
304 stainless steel or

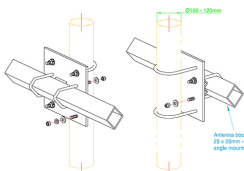
**SKU: A48-AM**  
Galvanised steel

Right-angle +/- 45 deg Yagi  
mount for 25mm RHS  
30-50mm mount pole




**SKU: S48-AM-76**  
304 stainless steel right-angle  
+/- 45 deg Yagi mount for  
25mm RHS, 60-75mm mount  
pole

**SKU: A48-AM-65**  
Galvanised steel right-angle +/-  
45 deg Yagi mount for 25mm  
RHS, 50-65mm mount pole



**SKU: S48-AM-120**  
304 stainless steel or

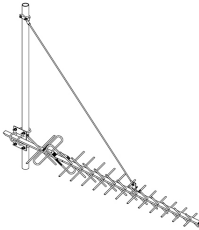
Right-angle +/- 45 deg Yagi  
mount for 25mm RHS,  
100-120mm mount pole



**SKU: YS1-48**  
Single tension strut support  
or

**SKU: YS2-48**  
Dual tension strut support with  
spreader bar

Mount pole and Yagi mount  
clamp not supplied



**SKU: YS1-48-CP**  
Single tension strut support

For mounting antenna in +/- 45  
degree orientation

Suitable feeder coaxial cable and connectors



**SKU: 7890**  
RU400 Solid copper conductor,  
low loss coaxial cable  
CNT-400 / LMR-400™ equivalent  
(\* times microwave)

**SKU: 7890-2** - ultra flexible

Available in 100m ,300m or  
500m rolls or alternatively  
request a custom cable  
assembly



**SKU: NM-8226**  
N-type male crimp connector  
for RU400 low loss, solid  
conductor

Tri-metal plated



**SKU: ZCG1250**  
1/2" corrugated shielding,  
foam dielectric coaxial cable

**SKU: ZCG1250SF** - super flex, helical

Available in per metre, or 500m  
rolls or alternatively request a  
custom cable assembly



**SKU: NM1250**  
N-type male clamp connector  
for 1/2" flexible, corrugated  
shielded, coaxial cable

**SKU: NM1250SF** - super flex, helical

Tri-metal plated